



Junction Box Format\*

- Improves feed conversion
- Promotes early weight gain
- Low-profile, wide beam angle
- Advanced system specialized for poultry
- 12W LED equivalent to 100W incandescent
- Enhances animal welfare
- Built For Your Barn® design
- Patented spectral output†



Base Unit  
Format\*\*

Edison Base  
Format

Hard Wire  
Format

Jelly Jar  
Format

\*Product shown with recommended junction box  
\*\*Compatible with AgriShift® STC/STA Stringer



AgriShift® lighting systems “shift” spectrum and intensity, meeting the individual needs of your animals¹.



Dim-to-Blue® technology encourages uniform growth by offering healthy bird development during every growth stage.



A Built For Your Barn® design uses techniques and materials that withstand harsh barn environment for years to come.

## Animal-Centric Lighting Systems

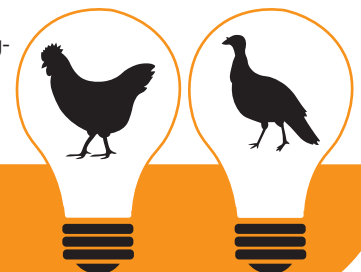
### Productivity Enhancement

The AgriShift® MLB lighting fixture for broiler and turkey operations is made with species-specific, Dim-to-Blue®, technology and a Built For Your Barn® design. It offers an optimized color spectrum and full dimming capability, allowing producers to enhance production by controlling photoperiod and light intensity throughout the entire life cycle of the bird.

With an AgriShift® Controller and a ONCE® recommended lighting program, producers can improve bird weight, flock uniformity and feed conversion rates, while lowering stress levels.

### The Science Behind the Technology

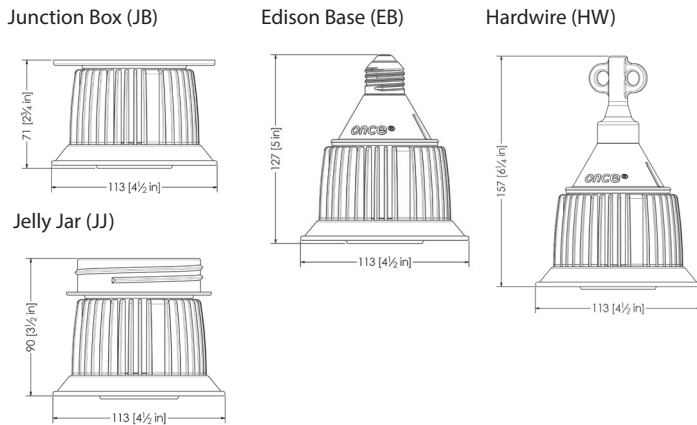
The AgriShift® MLB has an optimized blue/green spectrum with added red content for uniform growth and healthy bird development. Green light increases growth during the early stages, while blue light has been shown to elevate plasma androgens in poultry at later stages of development. Other studies show that blue light calms birds by reducing both corticosterone levels and heterophil:lymphocyte ratios; blood markers for short- and long-term stress.



## AgriShift® MLB Specifications

|                          |   |
|--------------------------|---|
| Nominal Power            | 12W (at full intensity)   |
| Luminous Flux            | 985 lm human photopic (120V)<br>1075 lm human photopic (230V)<br>1710 lm <i>poultry</i> photopic (120V)<br>1778 lm <i>poultry</i> photopic (230V)   |
| Input Voltage            | 120 VAC / 60 Hz   |
| Beam Angle               | 180°  |
| Light Output Equivalence | Up to 75W incandescent  |
| Spectral Output          | Poultry specific red with blue/green enhanced white   |
| Operating Temperature    | -20°C to 40°C / -4°F to 104°F   |
| Dimmable Range           | 100% to 5%, dims to blue white moonlight  |
| Dimmer Type              | Phase Modulation or Amplitude Control*  |
| Environmental Ratings    | Suitable for wet locations (JB, JJ, HW),<br>ROHS Compliant, Suitable for damp locations (EB),<br>Suitable for Indoor Corrosive Environments,<br>Tested to CAN/CSA C22.2 NO. 94.2-07, CLAUSE 8.7 |
| Safety                   | ETL Listed, Conforms to UL std. 1598 (JB)<br>Certified to CAN/CSA C 22.2 No. 250.-08 (JJ)<br>Conforms to UL Std. 1993 (JJ)<br>Certified to CSA Std. C 22.2 No. 1993 (JJ)                        |
| Rated Life               | 50,000 hours  |

## AgriShift® MLB Mechanical Dimensions



## Ordering Information

| AgriShift® MLB 120V   | SKU                     |
|---|-------------------------|
| Base Unit (BU)  | MLB-FSWB-BU-180-012-120 |
| Edison Base (EB)  | MLB-FSWB-EB-180-012-120 |
| Jelly Jar (JJ)  | MLB-FSWB-JJ-180-012-120 |
| <i>Includes JJ adapter/connector kit</i>                              |                         |
| Junction Box (JB)   | MLB-FSWB-JB-180-012-120 |
| <i>Includes JB adapter/connector kit</i>                              |                         |
| Hard Wire (HW)  | MLB-FSWB-HW-180-012-120 |
| AgriShift® MLB 230V   | SKU                     |
| Base Unit (BU)  | MLB-FSWB-BU-180-012-230 |
| Edison Base (EB)  | MLB-FSWB-EB-180-012-230 |
| Jelly Jar (JJ)  | MLB-FSWB-JJ-180-012-230 |
| <i>Includes JJ adapter/connector kit</i>                              |                         |
| Junction Box (JB)   | MLB-FSWB-JB-180-012-230 |
| <i>Includes JB adapter/connector kit</i>                              |                         |
| Hard Wire (HW)  | MLB-FSWB-HW-180-012-230 |
| AgriShift® MLB Accessories  | SKU                     |
| AgriShift® Master Controller 120V                                     | 30-014-00178-L123       |
| AgriShift® Slave Dimmer 120V  | 30-014-00179-L123       |
| AgriShift® Master Controller 240V                                     | 30-014-00180-L123       |
| Junction Box  | PRB57550GY              |
| <i>4 of the 5 KO openings are sealed, openings are 3/4"</i>           |                         |
| Junction Box Cover  | PRB5755GYKO             |
| AgriShift® STC, Stringer Connector<br>~ 24 1/2 m OAL, 2.43 m sections | STC-0183-10-080         |
| AgriShift® STC, Stringer Connector<br>~ 30 1/2 m OAL, 3 m sections    | STC-0184-10-100         |
| AgriShift® STA, Stringer Adapter, 30 cm OAL                           | STA-0197-3-012          |
| AgriShift® STA, Stringer Adapter, 1 cm OAL                            | STA-0189-3-039          |
| AgriShift® STA, Stringer Adapter, 2 cm OAL                            | STA-0190-3-079          |
| AgriShift® STA, Stringer Adapter, 1 cm OAL                            | STA-0191-3-118          |
| AgriShift® STA, Stringer Adapter, 1 cm OAL                            | STAR-0198-3-004         |
| <i>Male connector on one end</i>                                      |                         |

\* For optimum dimming performance use AgriShift® Controllers

# Complete Your AgriShift® Lighting System: AgriShift® Master Controller and Slave Dimmer

- Precise, consistent, incremental dimming
- Daylight and night time modes
- Fully automatic control or manual options
- Program up to 500 days divided into 20 lighting periods

The integrated AgriShift® Master Controller and Slave Dimmer provide smooth, programmable dimming to enable the full potential of any ONCE® AgriShift® fixture. They offer several advanced features that address the complex needs of today's modern farming facilities and can both be easily programmed with the accessible display and program buttons on the front panel.



Master Controller



Slave Dimmer